



2021-2022 EDITION | VERSION 1



HITCHDOCPOWERSPORTS.COM



AMERICAN MANUFACTURING IS NOW HITCHDOC POWERSPORTS

With a focus on producing tough, reliable equipment built from American steel and strict adherence to ISO 9001 quality standards, HitchDoc is proud to put its name and reputation behind all of the products in this catalog. Whether you're looking for a complete Eagle Plow system or a simple accessory, HitchDoc PowerSports is your source for quality American made solutions for ATVs, UTVs and other recreational vehicles. Get moving with HitchDoc PowerSports.



EAGLE SNOW PLOWS

Eagle Snow Plows work on most makes and models of ATVs and UTVs. Each blade easily engages and disengages from the plow system for easy storage between uses. Blades are available as Standard Straight Blades, Slanted Country Blades, and V-Blades. All blades are made from 11 gauge American steel that's precision cut, rolled, welded, and powder coated for the ultimate combination of performance and durability. Unlike plows made of lighter steel or even plastic, Eagle Plows are rugged and heavy enough to plow through the snow without drifting above it.



EAGLE WINCH

With a full metal composition and a hardened triple planetary gear system, Eagle Winches are made to get you out of even the stickiest of situations. All Eagle Winches allow for easy free spooling and come standard with a handlebar rocker switch. An optional wireless remote kit is also available.

Winch mounts made from American steel are specifically made for your ATV or UTV and are sold separately.



TALON TIRE CHAINS

Get a grip with Talon Tire Chains. Zinc plated, ladder style chains with deep links won't fall between tire lugs. Move through hard packed snow, slush, or over ice with Talon Tire Chains.

TABLE - OF - CONTENTS

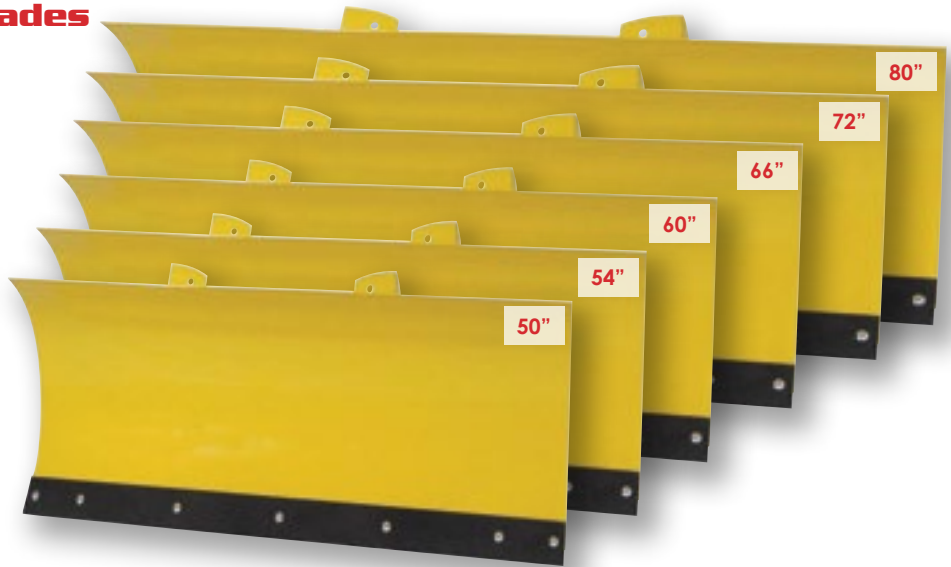
4	Eagle Snow Plows
6	Eagle Plow System
8	Gen II Plow System
9	Eagle UTV Plow System
10	Mount to Push Tube Attachments
11	Order Guide
12	Mount Guides
21	Plow Replacement Parts
22	Blade Adjustment
23	Talon Tire Chains
24	Eagle Winch
26	Racks & Carriers
28	Receivers
29	Receiver Hitch Mounts
30	ATV Accessories
31	Towing
32	Motorcycle Hitches
33	Motorcycle Hitch Mounts
36	Snowmobile Tools
38	DirtMaster
39	Other Leading Products
40	Warranty & Return Policy

EAGLE SNOW PLOWS

Dating back to the 3-wheeler era, Eagle Plows have withstood the test of time. Today, HitchDoc PowerSports continues to produce quality blades from American steel in Minnesota, USA. Designed for strength and durability, Eagle Plows start with 11-gauge steel that is precision laser cut, rolled, and welded for maximum performance. All plow systems are powder coated with a high gloss finish in black, red, or yellow, depending on blade style.

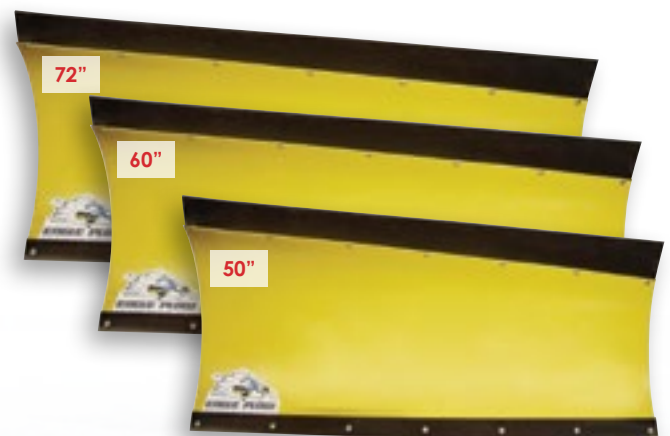
Standard Straight Blades

- Rugged design for easy snow rolling
- Reversible and replaceable heavy duty wear bar
- Adjustable to 5 positions with manual adjuster
- Compatible with Eagle Motion Pac (page 22) for easy hydraulic direction control from your UTV
- Adjustable skid shoes with spacers protect the blade and plowing surface
- Available in sizes from 50 to 80 inches in yellow or black
- Rubber flap and plow markers are standard on blades over 60 inches



Slanted Country Blades

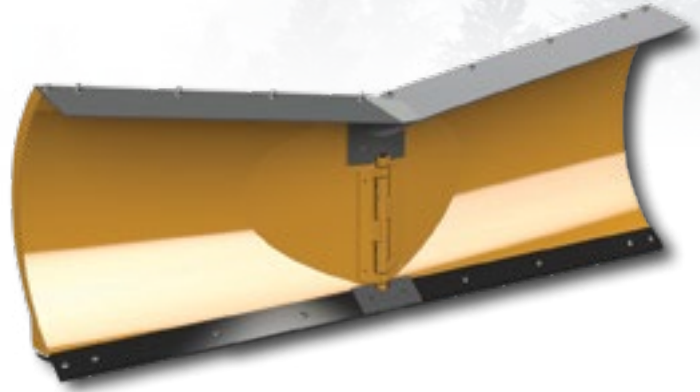
- Slanted design for high-capacity plowing
- Reversible and replaceable heavy duty wear bar
- Adjustable to 5 positions with manual adjuster
- Compatible with Eagle Motion Pac (page 22) for easy hydraulic direction control from your UTV
- Adjustable skid shoes with spacers provide smooth surface contact
- Rubber flap and plow markers are standard on all Country Blades



EAGLE SNOW PLOWS

Eagle Classic & 2960 Series V-Blades

- Designed to cut snow straight, angled to each side, scooped forward, or V position back
- Adjustable blade panels for variable movements
- Removable and replaceable cutting edge
- Winch lift required



	PART #	WIDTH	HEIGHT	ANGLED CUT WIDTH	MACHINE SIZE	
STANDARD STRAIGHT BLADES	2910-Black	50"	15 ¾"	43 ¾"	350cc+	
	2911-Yellow					
	2912-Black	54"	15 ¾"	47 ¼"	350cc+	
	2913-Yellow					
	2920-Black	60"	15 ¾"	52 ½"	600cc+	
	2921-Yellow					
	2927-Black	66"	15 ¾"	57 ¾"	650cc+	
	2928-Yellow					
	2922-Black	72"	15 ¾"	63"	700cc+	
	2924-Yellow					
	2931-Black	80"	15 ¾"	70"	850cc+	
2932-Yellow						
SLANTED COUNTRY BLADES	2915-Black	50"	17"-21 ¾"	43 ¾"	400cc+	
	2916-Yellow					
	2925-Black	60"	17"-21 ¾"	52 ½"	600cc+	
	2926-Yellow					
	2917-Black	72"	17"-21 ¾"	63"	700cc+	
	2918-Yellow					
V-BLADES	MANUAL		SCOOPED		V	
	2919-Red	60"	17"	53.4"	53"	600cc+
	2929-Red	66"	17"	58.9"	58"	650cc+
	2937-Red	72"	17"	64.4"	63.1"	700cc+
	2961 – Black 2967 – Yellow	72"	21"-26"	63 ¾"	66"	800cc+
	2963 – Black 2969 – Yellow	80"	21"-27 ½"	71"	73 ¼"	1000cc
	HYDRAULIC		SCOOPED		V	
	2960 – Black 2966 – Yellow	72"	21"-26"	57 ½"	66"	1000cc
	2962 – Black 2968 – Yellow	80"	21"-27 ½"	63 ¾"	73 ¼"	1000cc

ORIGINAL EAGLE PLOW SYSTEM

The Original Eagle Plow System mounts to the belly of your ATV, providing a balanced, easy-to-install system that is time tested. With years of experience and a commitment to continuous innovation, Eagle Plow Systems are designed to be compatible with modern machine mounts. Each system consists of a model specific mount, universal push tube mount, and push tube with swivel. These parts are individually powder coated with a jet black finish that will withstand the harsh winter elements and are all compatible with any Eagle Plow Blade.

All blades in this system can be lifted using either a hand lift kit or winch. Plow system replacement parts and accessories can be found on [page 21](#).

This system is not compatible with 2960 Series V-Blades.



ORIGINAL EAGLE PLOW SYSTEM

Model Specific ATV Mid-Mount Plate:

- Made from 11-gauge steel & attaches with included hardware
- Designed to stay on year round without interfering with oil changes or ground clearance
- Acts as a steel skid plate
- See "Mount Guides" for specific ATV mid-mount

Universal Push Tube Mount Plate:

- Made from 10-gauge steel & attaches with included grade 5 carriage bolts
- Removable after the season
- Instant engaging and disengaging of plow system with pins and Quick-Latch Brackets
- Replaceable with part number 0200

Original Eagle Push Tube with Swivel:

- Manufactured from 1 ½ inch high strength square tubing (part number 2906)
- Attaches instantly and locks into place with the Quick Latch Brackets
- V-shaped design & cross bars increase stability
- Swivel rotates on a heavy duty 5/8 inch bolt mounted to ¼ inch solid steel for 5 position adjustments and 30° of rotation to each side

Eagle Blade:

- Mounts to push tube swivel with ½ inch bolts
- Bolt on blade stops are adjustable and offer 4 blade pitch positions
- Comes with trip springs and eye bolts for added blade plowing protection
- Rugged construction designed to plow through the snow, not ride over it.
- See [page 4](#) for specific blade information



GEN II PLOW SYSTEM

Designed for the ATV enthusiast who wants quick connect/disconnect, the Gen II Plow System mounts to the front of the ATV frame with a model specific mount that connects your machine to the push tube and blade. The system is made up of 3 key components: Gen II Front Mount, Gen II Push Tubes with Swivel, and any Eagle Plow Blade (except the 2960 Series V-Blades). All pieces in this system are made in Minnesota, USA and are powder coated for a long-lasting finish, no matter what the elements. The blade in this system can only be lifted using a winch.

Model Specific ATV Front Mount:

- Quick and easy engaging and disengaging with Quick-Latch pins
- Mounts may be removed in off season to maintain ground clearance
- See ["Mount Guides"](#) for ATV Specific Front Mount options

Gen. II Eagle Push Tubes with Swivel:

- Manufactured from 1 ½ inch high strength square tubing
- Attaches in seconds with Quick-Latch brackets
- Swivel rotates on a heavy duty 5/8 inch bolt mounted to ¼ inch solid steel for 5 position adjustments and 30° of rotation to each side
- See [page 10 & 11](#) for specific push tube information

Eagle Blade:

- Attaches to Swivel System with ½ inch bolts
- Bolt on blade stops are adjustable and offer 4 blade pitch positions
- Comes with trip springs and eye bolts for added blade plowing protection
- See [page 4 & 5](#) for specific blade information



EAGLE UTV PLOW SYSTEM

Put your UTV to work this winter! When you want to move snow with a front mount install, the Eagle UTV Plow System is for you. Front mount connection points are easily accessible to quickly engage & disengage the plow assembly. This system is composed of a model specific mount, UTV push tube with swivel & any Eagle Plow Blade.

Blade lifting can only be done with a winch & blade turning can be done manually or with the Eagle Motion Pac found on [page 22](#). Plow system replacement parts & accessories can be found on [page 21](#).

Model Specific UTV Front Mount:

- Manufactured from ¼ inch steel & attaches to frame with grade 5 hardware
- Push tubes attach with included clevis pins
- Some mounts may recommend off season removal to maintain ground clearance
- See "[Mount Guides](#)" for specific UTV Front Mounts

UTV Push Tubes with Swivel:

- Manufactured from 1 ½ inch high strength formed tubing
- Multiple cross members and V-shaped design improve durability for the whole system
- Swivel rotates on a heavy duty ⅝ inch bolt mounted to ¼ inch solid steel for 5 position adjustments and 30° of rotation to each side
- Compatible with Eagle Motion Pac ([page 22](#)) for easy hydraulic direction control
- See [page 10 & 11](#) for specific push tube information

Eagle Blade:

- Attaches to Swivel System with ½ inch bolts
- Bolt on blade stops are adjustable and offer 4 blade pitch positions
- Comes with trip springs and eye bolts for added blade plowing protection
- See [page 4 & 5](#) for specific blade information



MOUNT TO PUSH TUBE ATTACHMENTS

Original Eagle ATV Mid-Mount
(Part #2906)



Eagle Gen. II ATV Front Mount
(Part #3906/3908)



Eagle UTV Front Mount
(Part #2805/2808, 2806/2807)



ORDER GUIDE

Original ATV Mid-Mount Eagle Plow System

The Original Eagle Mid-Mount Plow System is ready to plow through snow, no matter how much stands in your way. The mount & push tubes mount to the belly of your ATV. Use any Eagle Plow Blade (except the 2960 Series V-Plow) with this system.

ORDER GUIDE

- Review the Model Specific [Mount Guides](#) Part # _____
- **Note: Universal Push Tube Mount is included with Model Specific Mounts
- Order the Original Eagle Push Tube Part # 2906
- Select your Eagle Plow Blade ([page 4 & 5](#)) Part # _____
- Optional Lifting Accessory: Hand Lift Kit ([page 22](#)) Part # _____
- Optional Lifting Accessory: Winch ([page 24 & 25](#)) Part # _____
- Optional Lifting Accessory: Winch Mount ([page 12-20](#)) Part # _____

Gen. II ATV Front Mount Eagle Plow System

The Eagle Gen. II Front Mount Plow System features a mount made specifically for your ATV with push tubes to match either tires or tracks. This system works with any Eagle Plow Blade (except the 2960 Series V-Plow).

ORDER GUIDE

- Review the Model Specific [Mount Guides](#) Part # _____
- Order the proper Gen. II Push Tube Part # _____
- Standard Push Tube for Tires: Part # 3906
- Extended Push Tube for Tracks: Part # 3908
- Select your Eagle Plow Blade ([page 4 & 5](#)) Part # _____
- Optional Lifting Accessory: Winch ([page 24 & 25](#)) Part # _____
- Optional Lifting Accessory: Winch Mount ([page 12-20](#)) Part # _____

UTV Eagle Plow System

Each mount is made specifically for your make/model and mounts to the front of your machine.

ORDER GUIDE

- Review the Model Specific [Mount Guides](#) Part # _____
- Order the proper Eagle UTV Push Tube Part # _____
- Standard, Country, Red V-Blade Push Tube for Tires: Part # 2805
- 2960 Series V-Blade Push Tube for Tires: Part # 2806
- Standard, Country, Red V-Blade Push Tube for Tracks: Part # 2808
- 2960 Series V-Blade Push Tube for Tracks: Part # 2807
- Select your Eagle Plow Blade ([page 4 & 5](#)) Part # _____
- Optional Lifting Accessory: Winch ([page 24 & 25](#)) Part # _____
- Optional Lifting Accessory: Winch Mount ([page 12-20](#)) Part # _____
- Optional Eagle Motion Pac. Part # _____
- 72" Country & 80" Standard Blades: Part # 2800
- 66"-72" Standard Blades: Part # 2800-15

MOUNT GUIDES

MODEL	YEAR	MID-MOUNT	FRONT MOUNT	WINCH MOUNT
ARCTIC CAT				
ATV				
250 2x4, 4x4	99-05	2015	-	1005
300 2x4, 4x4	98-01	2015	-	1005
300 2x4, 4x4	02-04	2015	-	1010
300 2x4, 4x4	05	2015	-	1005
350 4x4 (CR)	12	2012	-	-
366 4x4	08-09	2012	-	1012
400 2x4, 4x4	96-01	2015	-	1005
400 2X4, 4X4 (ACT) (i)	02-05	2015	-	1010
400 2x4, 4x4	06-08	-	3950	FIM
400 Automatic 2x4, 4x4 (LE)	03-08	2015	3950	1010
400 Automatic 4x4 ACT	03-04	2015	3950	-
400 Automatic 4x4 TBX	04-06	2015	3950	FIM
400 Automatic 4x4 TRV	06-12	2015	-	FIM
400 Automatic 4x4 TRV	13	2015	3950	FIM
400 Automatic 4x4	14	2015	3950	FIM
450 4X4	10-12	2015	3950	1015
454 2x4 / 4x4	98	2015	-	1005
500 4x4	96-01	2015	-	1005
500 4x4	02-04	2015	-	-
500 4x4	05-14	2015	3950	-
500 4x4	15-17	-	3950	-
500 AUTO	00-02	2020	-	1005
500 TBX 4x4	02-06	2015	3950	FIM
500 TRV 4x4	03-05	2015	-	-
500 TRV 4x4	06-16	2015	3950	FIM
500i	96-02	2015	-	1005
550 4x4	09-14	2015	3950	1015
550 Alterra 4x4	16	2014	3951	FIM
550 Alterra TRV 4x4	17	2014	3951	FIM
550 TRV 4x4	09-16	2015	3950	FIM
550 XR 4x4	15	2014	3951	FIM
650 4x4	04-05	2015	-	-
650 4x4	06-11	2015	3950	-
650 TRV 4x4	07-11	2015	-	FIM
700 4x4 (AUTO) (AUTO EFI) (M4) (H1 SE)	06-16	2015	3950	1015

MODEL	YEAR	MID-MOUNT	FRONT MOUNT	WINCH MOUNT
700 Alterra 4x4 (XT)	16-17	2014	3951	FIM
700 Alterra TRV 4x4	17	2014	3951	FIM
700 Diesel	06-16	2015	-	1015
700 Mud Pro	06-08	2015	-	1015
700 Mud Pro	09-17	2015	-	-
700 TBX 4x4	06	2015	-	FIM
700 TBX 4x4	07-17	2015	3950	FIM
700 TRV 4x4	06-16	2015	3950	FIM
700 VLX	17	2015	3950	FIM
700 XR 4x4	15	2014	3951	FIM
1000 4x4	08-17	2015	3950	FIM
1000 TRV 4x4	09-17	2015	3950	FIM
1000 Thundercat H2 (LE) 4X4	08-10	-	3950	FIM
1000 MudPro 4X4	10-17	2015	-	-
UTV; SxS				
500 Prowler	17	N/A	2865	-
500 Prowler HDX	14-15	N/A	2860	-
500 Prowler HDX	16-17	N/A	2864	FIM
550 Prowler (XT)	09-14	N/A	2860	1860
550 Prowler (XT)	15	N/A	2864	-
650 Prowler H1 XT 4X4	06-09	N/A	2860	1860
700 Prowler (XTX)	08-14	N/A	2860	1860
700 Prowler	15-17	N/A	2864	FIM
700 Prowler HDX	16-17	N/A	2864	FIM
700 Prowler HDX Crew	17	N/A	2864	FIM
1000 Prowler XTZ 4X4	10-14	N/A	2860	1860
1000 Prowler	15-16	N/A	2864	FIM
Prowler Pro	20	N/A	2878 ²	FIW
Prowler Pro Crew	20	N/A	2878 ²	1878
Wildcat Sport	14-17	N/A	2866	FIM
Wildcat Trail	14-17	N/A	2866	FIM
ARGO				
ATV				
500 Xplorer XR (LE)	18	2180	3980	1180
500 Xplorer XRT (LE)	18	2180	3980	1180
1000 Xplorer XRT LE	18	2180	-	1180

MOUNT GUIDES

MODEL	YEAR	MID-MOUNT	FRONT MOUNT	WINCH MOUNT
BOBCAT				
UTV; SxS				
3200 Series	11-14	N/A	2859	1859
3400 4X4	12-14	N/A	2859	1859
3400 4X4	15-20	N/A	2885-A	1846
UV34 Diesel	19-20	N/A	2885-A	1846
UV34 Gas	20	N/A	2885-A	1846
CAN-AM				
ATV				
330 Outlander 2x4, 4x4 (XT)*	03-05	2110	-	1110
330 Outlander Max 4x4 (XT)*	03-05	2110	-	1110
400 Outlander 4X4 (XT)*	03-05	2110	-	1110
400 Outlander 4X4 (XT)*	06-12	2111	3911	1112
400 Outlander 4X4 (XT)*	13-14	2115	3911	1112
400 Outlander 4X4 (XT)*	15	2115	-	1112
400 Outlander Max 4x4 (XT)*	06-12	-	-	1112
400 Outlander Max 4x4 (XT)*	13	2115	3919	1112
400 Outlander Max 4x4 (XT)*	14-15	2115	-	1112
450L Outlander (XT)*	15-16	-	3928	FIM
450L Outlander MAX (XT)*	15-16	-	3928	FIM
450 Outlander (XT)*	17-18	-	3928	FIM
450 Outlander (XT)*	19	-	3929	-
450 Outlander (XT)*	20	2116	-	-
450 Outlander MAX (XT)*	17-18	-	3928	FIM
500 Outlander (XT)*	07-12	2111	3911	1112
500 Outlander (XT)*	13-15	2115	3919	1112
500 Outlander 4x4 MAX (XT)*	07-12	-	3911	-
500 Outlander 4x4 MAX (XT)*	13-15	2115	3919	-
500 Quest	02-04	2105	-	1105
500 Traxter	99-05	2105	-	1105
570 Outlander (XT)*	16-17	-	3928	1112
570 Outlander (XT)*	18	-	3928	-
570 Outlander (XT)*	19	2116	3929	-
570 Outlander MAX (XT)*	16-17	-	3928	1112

MODEL	YEAR	MID-MOUNT	FRONT MOUNT	WINCH MOUNT
570 Outlander MAX (XT)*	18	-	3928	-
570 Outlander MAX (XT)*	19	-	3929	-
570 Outlander MAX (XT)*	20	2116	-	-
570L Outlander (XT)*	16	-	3928	-
570L Outlander MAX (XT)*	16	-	3928	-
570 Renegade 4x4 XC, X XC	16-18	2115	-	-
650 Outlander 6x6	13-17	2115	-	-
650 Outlander (XT)*	06-12	2111	3911	1112
650 Outlander (XT)*	13-19	2115	3919	-
650 Outlander MAX (XT)*	06-12	2111	-	1112
650 Outlander MAX (XT)*	13-18	2115	3919	1112
650 Quest	02-04	2105	-	1105
800 Outlander (XT)*	06-11	2111	3911	-
800 Outlander (XT)*	12-15	2115	3919	1112
800 Outlander MAX (XT)*	06-12	2112	3911	1112
800 Outlander MAX (XT)*	13-15	2115	3919	1112
800R Outlander (XT)*	11	2111	3911	1112
800R Outlander (XT)*	12	2115	3912	1112
800R Outlander (XT)*	13-15	2115	3919	-
800R Outlander MAX (XT)*	11-12	2111	-	1112
800R Outlander MAX (XT)*	13-15	2115	3919	-
800 Renegade	07-11	2111	-	1115
850 Outlander (XT)*	16-18	2115	3919	-
850 Outlander (XT)*	19	2115	-	-
850 Outlander MAX (XT)*	16-18	2115	3919	-
850 Renegade (G2)	16-17	2115	-	-
1000 Outlander 4x4 (XT)*	13-18	2115	3919	1112
1000 Outlander MAX 4x4 (XT)*	13-18	2115	3919	1112
1000 Renegade (G2)	12-18	2115	-	-

MOUNT GUIDES

MODEL	YEAR	MID-MOUNT	FRONT MOUNT	WINCH MOUNT
CAN-AM				
UTV, SxS				
500 Defender HD5	17-19	N/A	2809	FIM
500 Defender HD5	20-21	N/A	2809-C	-
800 Commander	11-17	N/A	2811	1811
800 Defender HD8	16-19	N/A	2809	FIM
800 Defender HD8 (XT)*	20-21	N/A	2809-C	-
800 Maverick Trail	18-19	N/A	2819 ¹	1819
1000 Commander	11-17	N/A	2811	1811
1000 Defender HD10	16-19	N/A	2809	FIM
1000 Defender HD10 (XT)*	20-21	N/A	2809-C	-
1000 Maverick	13-17	N/A	2810	1810 ⁴
1000 Maverick Sport	19	N/A	2819 ¹	1819
1000R Maverick Sport MAX	20-21	N/A	2819 ¹	1819 ¹
1000 Maverick Trail	18-20	N/A	2819 ¹	1819
CAT				
UTV, SxS				
CUV82	18-19	N/A	2878 ²	1878
CUV85 (5-Seater)	19	N/A	2878 ²	1878
CUV102D	18-19	N/A	2878 ²	1878
CUV105D (5-Seater)	19	N/A	2878 ²	1878
CF MOTO				
ATV				
400 Cforce	16-19	2071	-	-
500 Cforce	13-14	2070	-	-
500 Cforce HO (2-Person)	15-18	2071	-	FIW
500 Cforce S (1-Person)	17-19	2071	-	FIW
500 Cforce EPS (1-Person)	20	2071	-	FIW
600 Cforce	13-14	2070	-	-
600 Cforce	19	2071	-	FIW
600 Cforce Touring	20	2071	-	FIW
800 Cforce	13-16	2070	-	FIW
X-5 (LWB) (SWB)	12-14	2070	-	-

MODEL	YEAR	MID-MOUNT	FRONT MOUNT	WINCH MOUNT
X-6 (LWB) (SWB)	12-14	2070	-	-
X-8 (LWB) (SWB)	12-14	2070	-	-
UTV, SxS				
500 Uforce	16-17	N/A	2872	FIW
500 Zforce Trail	17-19	N/A	2869	FIW
600 Rancher (EFI)	12-13	N/A	2870	-
800 Uforce	13-18	N/A	2872	FIW
800 Zforce EX	14-20	N/A	2869	FIW
800 Zforce Trail	17-19	N/A	2869	FIW
1000 Uforce	19	N/A	2891	FIW
1000 Zforce	18-19	N/A	2869	FIW
CUB CADET				
UTV; SxS				
550 Challenger (MX)	17-21	N/A	FIM ⁵	FIW
700 Challenger	15	N/A	2823	-
750 Challenger (MX)	17-21	N/A	FIM ⁵	FIW
Tracker	07-09	N/A	2822	1822
Tracker	10-14	N/A	2822	-
Volunteer	07-14	N/A	2822	1822
HONDA				
ATV				
TRX 300	88-92	2215	-	-
TRX 300	93-00	2215	-	1240
TRX350 Rancher	00-03	2210	3922	1220
TRX350 Rancher	04-06	2210	3923	1220
TRX400 Foreman	95-04	2210	-	1215
TRX400 Rancher	00-03	2210	-	1220
TRX400 Rancher	04-07	2210	3923	1220
TRX420 Rancher 2x4, 4x4 (All Models)	07-13	2230	3926	1225
TRX420 Rancher 4X4 "IRS ONLY"	14	2230	3926	1225
TRX420 Rancher 4X4 "SOL-ID AXLE ONLY"	14	2237	3927	-
TRX420 Rancher 2x4, 4x4 (All Models)	15-18	2237	3927	1234-A ³
TRX420 Rancher 2x4, 4x4 (All Models)	19-20	2206	-	1234-A ³
TRX450 Foreman	95-97	2210	-	1215
TRX450 Foreman	98-04	2210	3924	1215
TRX450 Rubicon	98-04	-	3924	1215

MOUNT GUIDES

MODEL	YEAR	MID-MOUNT	FRONT MOUNT	WINCH MOUNT
TRX500 Foreman	05-06	2225	3925	1230
TRX500 Foreman	07-11	2225	3925	1235
TRX500 Foreman S/ES/FPE	12-13	2236	-	1236
TRX500 Foreman (All Models)	14-17	2237	3927	1234-A ³
TRX500 Foreman (All Models)	18	-	3927	1234-A ³
TRX500 Foreman (All Models)	19	2206	-	1234-A ³
TRX520 Foreman (All Models)	20	2206	-	1234-A ³
TRX520 Foreman (All Models)	21	2206	-	-
TRX500 Rubicon (All Models)	01-04	2205	-	1210
TRX500 Rubicon (All Models)	05-06	2205	3925	1230
TRX500 Rubicon (All Models)	07-14	2205	3925	1235
TRX500 Rubicon (No Deluxe Models)	15-18	2206	3927	1234-A ³
TRX500 Rubicon (No Deluxe Models)	19	2206	-	1234-A ³
TRX520 Rubicon (No Deluxe Models)	20	2206	-	1234-A ³
TRX650 Rincon	03-05	2205	3905	1230
TRX680 Rincon	06-17	2205	3905	1230
UTV; SxS				
500 Pioneer	15-18	N/A	2839	1839 ³
700 Big Red MUV	09-13	N/A	2815	1815
700 Pioneer	14-19	N/A	2838	1838 ³
700 Pioneer	20-21	N/A	2838-A	1838 ³
700 Pioneer-4	14-19	N/A	2838	1838 ³
700 Pioneer-4	20-21	N/A	2838-A	1838 ³
1000 Pioneer	16-21	N/A	2845	1844 ⁴
1000 Pioneer-5	16-21	N/A	2845	1844 ⁴
1000 Talon X	19-21	N/A	-	1892
1000 Talon X-4	20-21	N/A	-	1892
INTIMIDATOR				
UTV, SxS				
750 Classic	20	N/A	2890	FIM
1000 Classic	20	N/A	2890	FIM

MODEL	YEAR	MID-MOUNT	FRONT MOUNT	WINCH MOUNT
1000 Truck	20	N/A	2890	FIM
GC1K	20	N/A	2890 ⁶	FIM
GC1K Crew	20	N/A	2890 ⁶	FIM
GC1K Truck	20	N/A	2890 ⁶	FIM
JOHN DEERE				
ATV				
500 Buck	04-06	2105	-	-
500 Trail Buck	04-05	2105	-	-
650 Buck	04-06	2105	-	-
650 Trail Buck	04-05	2105	-	-
UTV; SxS				
Gator 6X4	93-14	N/A	2831 ¹	1831
Gator HPX	04-12	N/A	2830	1831
Gator HPX	13-15	N/A	2830	-
550 Gator XUV	12-17	N/A	2833	1834
550 Gator XUV S4	12-17	N/A	2833	1834
560 Gator XUV	16-17	N/A	2833	1834
560 (E) Gator XUV	18-19	N/A	2833	-
560 Gator XUV S4	16-17	N/A	2833	1834
590 (E) (M) Gator XUV	16-19	N/A	2833	1834
590 (E) (M) Gator XUV	20	N/A	2833	-
590 Gator XUV S4	16-17	N/A	2833	1834
590 (E) (M) Gator XUV S4	18-19	N/A	2833	-
615E Gator HPX	18	N/A	2832	-
620i Gator XUV	07-10	N/A	2830	-
625i Gator XUV	11-15	N/A	2832	1832
825 (i) (E) (M) Gator XUV	11-19	N/A	2832	1832
825i Gator XUV S-4	13-17	N/A	2832	1832
835 (E) (M) (R) Gator XUV	18-21	N/A	2829	-
850i Gator RSX	12-15	N/A	2834	1834
850D Gator XUV	07-10	N/A	2830	-
855D Gator XUV	11-15	N/A	2832	1832
855D Gator XUV S-4	11-15	N/A	2832	1832
860 (i) (E) (M) Gator RSX	16-20	N/A	2834	-

MOUNT GUIDES

MODEL	YEAR	MID-MOUNT	FRONT MOUNT	WINCH MOUNT
KAWASAKI				
ATV				
300 Bayou	89-03	2320	-	1330
300 Prairie	99-02	2325	-	-
360 Prairie	02-12	2315	-	1320
400 Prairie	97-02	2325	-	1310
650 Brute Force	05-11	2315	-	1315
650 Brute Force	12-13	2315	-	-
650i Brute Force	06-09	2330	-	1340
650i Brute Force	10	2330	-	-
650i Brute Force	11	2330	3931	1341
650i Brute Force	12	2330	-	1341
650i Brute Force	13	2330	-	-
650 Prairie	02-04	2315	-	1305
700 Prairie 4x4	04-06	2315	-	1335
750i Brute Force	05-07	2330	-	-
750i Brute Force	08-14	2330	3931	1341
750i Brute Force	15-18	2330	3931	1316
750i Brute Force	19-20	2330	3931	1316
750i Brute Force	21	2330	-	1316
UTV; SxS				
400 Mule SX (XC) (SE) (LE)	17-21	N/A	2841	1841
600 Mule	05-16	N/A	2840	1840
610 Mule	05-16	N/A	2840	1840
700 Mule Pro MX	19-21	N/A	2817	FIM
750 Teryx (RUV)	08-13	N/A	2842	1842
750 Teryx 4	12-13	N/A	2843	1843
800 Teryx (LE)	14-17	N/A	2843	1843
800 Teryx (LE)	18	N/A	2843	-
800 Teryx (LE)	19-20	N/A	2843-A	-
800 Teryx 4 (LE)	14-18	N/A	2843	1843
800 Teryx 4 (LE)	19-20	N/A	2843-A	1843
820 Mule Pro FX (LE)	16-20	N/A	2863-B	1862-A
820 Mule Pro FXR	18-20	N/A	2863	1862-A
820 Mule Pro FXT	15-20	N/A	2863-B	1862-A
1000 Diesel Mule Pro (DX) (DXT)	16-17	N/A	2863-B	1862-A
3000 Mule	01-08	N/A	2820	FIM
3010 Mule	01-08	N/A	2820	FIM

MODEL	YEAR	MID-MOUNT	FRONT MOUNT	WINCH MOUNT
4000 Mule	09-11	N/A	2821	-
4000 Mule (TRANS)	12-18	N/A	2821	1821
4010 Mule	09-11	N/A	2821	-
4010 Mule (SE) (TRANS)	12-20	N/A	2821	1821
KIOTI				
UTV; SxS				
2200 Mechron	14-16	N/A	2880	1880
2200 Mechron	17	N/A	2880	-
2400 K9	18-20	N/A	2881	-
2440 K9	18-19	N/A	2881	-
KUBOTA				
UTV; SxS				
400ci RTV 4X4	12-16	N/A	2814	1814
500 RTV 4X4 (2" Receiver)	09-16	N/A	2814	1814
500 RTV 4X4 (2" Receiver)	17	N/A	2814	-
900 RTV 4X4 (1-1/4" Receiver)	04-09	N/A	2814	1812
900 RTV 4X4 (2" Receiver)	10-16	N/A	2813	1813 ⁴
900 RTV 4X4 (Rect. Tube Bumper)	11-12	N/A	2814	-
1100 RTV 4X4 (1-1/4" Receiver)	08-10	N/A	2814	1812
1100 RTV 4X4 (Rect. Tube Bumper)	11-12	N/A	2814	1816
1140 RTV 4X4 Crew (2" Receiver)	10-16	N/A	2813	1813 ⁴
900 RTV-X	14-20	N/A	2814	FIM
1100C RTV-X	14-19	N/A	2814	FIM
1120D RTV-X	14-17	N/A	2814	FIM
1140 RTV-X	15-20	N/A	2814	-
RTV-XG850 Sidekick	18-21	N/A	2816	FIM
KYMC0				
UTV; SxS				
450i UXV (LE) (LE Prime) (LE Hunter)	15-19	N/A	2865	FIM
500i UXV 4X4	12-18	N/A	2855	FIM
700i UXV (LE) (LE EPS) (LE Prime) (LE Hunter)	14-18	N/A	2855	FIM

MOUNT GUIDES

MODEL	YEAR	MID-MOUNT	FRONT MOUNT	WINCH MOUNT
MAHINDRA				
UTV; SxS				
750 Retriever (Gas)	19-20	N/A	2890	FIM ⁷
1000 Retriever (Gas)	19-20	N/A	2890	FIM ⁷
1000 Retriever (Diesel)	19-20	N/A	2890	FIM ⁷
ODES				
UTV; SxS				
650 Comrade	17-19	N/A	2824	FIW
800 Dominator 2	13-16	N/A	2867	-
800 Dominator 4	13-16	N/A	2867	-
800 Dominator X2	15-16	N/A	2868	-
800 Dominator X4	15-16	N/A	2868	-
1000 Dominator	15-16	N/A	2867	-
1000 Dominator X2	15-16	N/A	2868	-
1000 Dominator X4	15-16	N/A	2868	-
1000 Dominator X4	17	N/A	2868	-
POLARIS				
ATV				
300 4X4	94-95	2420	-	-
300 Hawkeye	06-07	2425	-	1425
300 Sportsman	08-10	2425	-	1425
330 ATP	04-05	2410	-	1410
330 Magnum 4x4	03-06	2410	-	1410
400 Hawkeye	08-09	2425	-	1425
400 Hawkeye	10	2425	-	-
400 Sportsman	01-04	2405	-	1410
400 Sportsman	05	2405	3938	1415
400 Sportsman	06-07	2405	-	1415
400 Sportsman	08-09	2425	-	1425
400 Sportsman	10	2425	-	-
400 Sportsman	11-14	2405	3937	1413
425 Magnum	94-98	2420	-	-
450 Sportsman	05	2405	-	-
450 Sportsman	06	2405	3938	-
450 Sportsman (H.O.)	16-20	2411	3942-A	1413
450 Sportsman H.O.	21	2411	3942-A	1414
500 ATP	04-05	2410	-	1410
500 Sportsman	96-97	2410	-	-

MODEL	YEAR	MID-MOUNT	FRONT MOUNT	WINCH MOUNT
500 Sportsman	98-03	2405	-	1410
500 Sportsman	04	2405	-	1407
500 Sportsman	05-10	2405	3938	1415
500 Sportsman	11-13	2405	3937	1413
500 Sportsman	14	-	3937	1413
500 Sportsman 6X6	92	2410	-	-
500 Sportsman Touring	08-09	2410	-	1415
500 Sportsman Touring	12	2405	-	1413
500 Sportsman X2	06	2425	-	1415
500 Sportsman X2	07-08	2412	3938	1415
500 Sportsman X2	09	2410	3938	1415
550 Sportsman	09	2414	-	-
550 Sportsman	10-14	2414	3940	1414
550 Sportsman Touring	10-14	2414	-	-
550 Sportsman X2	10-14	2414	3940	1414
550 Sportsman XP	09-11	-	3940	1414
570 Sportsman	14	2411	3937	1413
570 Sportsman	15-21	2411	3942-A ⁵	1413 ⁵
570 Sportsman SP	15-19	2411	3942	1413
570 Sportsman SP	21	2411	3942-A ⁵	1413 ⁵
570 Sportsman Premium	21	2411	3942-A ⁵	1413 ⁵
570 Sportsman Touring	14	2411	3937	1413
570 Sportsman Touring (EPS) (Premium)	21	2411	3942-A ⁵	1413 ⁵
570 Sportsman Ultimate Trail	21	2411	3942-A ⁵	1413 ⁵
570 Sportsman Ultimate Utility	21	2411	3942-A ⁵	1413 ⁵
570 Sportsman X2	15-21	2411	3942-A ⁵	1413 ⁵
570 Sportsman 6x6	18	2411	-	1413
600 Sportsman	02-04	2410	-	1407
600 Sportsman	05-07	2410	-	1415
700 Sportsman	02-04	2410	-	1407
700 Sportsman	02-04	2410	-	1407
700 Sportsman	05-08	2410	-	1415
700 Sportsman X2	08	2412	-	1415
800 Sportsman	05-10	2410	-	1415
800 Sportsman	11	2405	-	1413
800 Sportsman	12-14	2405	3937	1413

MOUNT GUIDES

MODEL	YEAR	MID-MOUNT	FRONT MOUNT	WINCH MOUNT
800 Sportsman Big Boss 6X6	12	2405	-	1413
800 Sportsman Touring	08-09	2410	-	1415
800 Sportsman X2	07	2412	-	1415
800 Sportsman X2	09	2410	3938	1415
850 Scrambler	13-17	2414	-	1414
850 Scrambler	18-19	2414	-	1413
850 Scrambler XP	13-14	-	3941	1414
850 Sportsman	09-14	2414	3940	1414
850 Sportsman	15-18	2414	-	1414
850 Sportsman (SP)	19	2414	-	1414
850 Sportsman	20	2414	-	1414
850 Sportsman High Lifter	16-19	2414	-	1413
850 Sportsman Touring	10-14	2414	3940	1414
850 Sportsman Touring (SP)	15-18	2414	-	1414
850 Sportsman Touring (SP)	19	2414	-	1413
850 Sportsman X2	10	2414	-	1414
850 Sportsman X2	11	2414	3938	1414
1000 XP Scrambler	14-17	2414	-	1414
1000 XP Sportsman	15-19	2414	-	1414
1000 XP Sportsman	20-21	2414	-	FIW
1000 XP Sportsman Touring	15-18	2414	-	1414
Diesel 4X4	99-01	2405	-	-
Sportsman	93-95	2420	-	1400
Sportsman 6X6	91-99	2420	-	1400
Sportsman 6X6	00-06	2420	-	-
Sportsman ETX	15	-	3942-A	1413
Sportsman Twin (All CC'S)	05-09	-	3939	-
Xplorer 400 (Chain Drive)	96-98	2409	-	1400
Xplorer 400 (Shaft Drive)	98-02	2410	-	1410
Xplorer 400L (Shaft Drive)	96-97	2410	-	1410
Xplorer 500 (Shaft Drive)	97	2410	-	1410
UTV; SxS				
400 Ranger 4X4 Midsize	10-14	N/A	2847	1847
500 Ranger 4X4 Midsize (Crew)	11-13	N/A	2847	1847
500 Ranger 4X4 Midsize	17-18	N/A	2857	1847
500 Ranger 4X4 Midsize	19-20	N/A	2857	1857
500 Ranger 4X4 Midsize	21	N/A	2857-B	1857
570 Ranger 4X4 Midsize (2-Seater)	14-20	N/A	2857	1857

MODEL	YEAR	MID-MOUNT	FRONT MOUNT	WINCH MOUNT
570-4 Ranger 4X4 Midsize Crew (4-Seater)	14-18	N/A	2857	1857
570-4 Ranger 4X4 Midsize Crew (4-Seater)	19	N/A	2857	-
570 Ranger Full Size (3-Seater)	15	N/A	2885	1854
570 Ranger Full Size (3-Seater) 4x4 (Round Tube/800 Body Style)	16-19	N/A	2857	1857
570 Ranger Full Size (3-Seater) 4x4 (Round Tube/800 Body Style)	20-21	N/A	2857-B	1857
570-6 Ranger Full Size Crew (6-Seater) 4x4 (Round Tube/800 Body Style)	16-18	N/A	2857	1857
570-6 Ranger Full Size Crew (6-Seater) 4x4 (Round Tube/800 Body Style)	19-21	N/A	2857-B	1857
570 Ranger XP Full Size (3-Seater) 4x4 (Channel Tube/900 Body Style)	16-17	N/A	2885	-
570 RZR	12-18	N/A	2852	1852
700 Ranger	09	N/A	2846	-
700 Ranger Full Size Crew	08-09	N/A	2850	1850
700 Ranger Full Size Crew	10-11	N/A	2851	-
800 Ranger 4X4 Midsize (2-Seater)	13-14	N/A	2857	1847
800 Ranger Full Size 4x4 [3-Seater] (XP) (HD)	10-14	N/A	2851	1851
800 Ranger Full Size 4x4 Crew [6-Seater]	10-14	N/A	2851	-
800 Ranger 6x6	10-16	N/A	2851	-
800 RZR	08-14	N/A	2852	1852
800 RZR-4	10-14	N/A	2852	1852
900 RZR	11-14	N/A	2853	1853
900 RZR	15-18	N/A	2858	1858
900 RZR	19	N/A	2858	-
900 RZR-4	11-14	N/A	2853	1853
900 RZR-4	15-17	N/A	2858	1858
900 RZR S	15-18	N/A	2858	1858
900 RZR S	19-20	N/A	2858	-
900 RZR S-4	18	N/A	2858	1858
900 RZR Trail	16-17	N/A	2858	1858
900 RZR XC	15-17	N/A	2858	1858
900 XP Ranger Full Size	13-19	N/A	2885	1854

MOUNT GUIDES

MODEL	YEAR	MID-MOUNT	FRONT MOUNT	WINCH MOUNT
900 XP Ranger Full Size	13-19	N/A	2885	1854
900 XP Ranger Crew	14-19	N/A	2885	1854
900 XP Ranger Limited Edition	13-14	N/A	2854	-
1000 General	16-18	N/A	2858	1858
1000 General	19-21	N/A	2858	-
1000 General Deluxe	19-21	N/A	2858	FIW
1000 General Premium	19-20	N/A	2858	FIW
1000 General 4	17-18	N/A	2858	-
1000 Ranger	20	N/A	2885	1885
1000 Ranger	21	N/A	2886 ²	-
1000 Ranger Crew	20	N/A	2885	1885
1000 Ranger Crew	21	N/A	2886 ²	-
1000 RZR XP	14-18	N/A	2858	1858
1000 RZR XP	19-20	N/A	2858	-
1000 RZR XP	21	N/A	2858-B	-
1000 RZR XP-4	14-18	N/A	2858	1858
1000 RZR XP-4	19-20	N/A	2858	-
1000 RZR XP-4	21	N/A	2858-B	-
1000 RZR S	16-18	N/A	2858	1858
1000 RZR S	19-20	N/A	2858	-
1000 XP Ranger Full Size 4x4	17	N/A	2885	1854
1000 XP Ranger Full Size 4x4	18-20	N/A	2885	1885
1000 XP Ranger Full Size 4x4	21	N/A	2886 ²	1885
1000 XP Ranger Full Size 4x4 Crew	17-18	N/A	2885	1854
1000 XP Ranger Full Size 4x4 Crew	19-20	N/A	2885	1885
1000 XP Ranger Full Size 4x4 Crew	21	N/A	2886 ²	1885
Ranger (All CC'S)	05-08	N/A	2850	1850
Ranger XP (All CC'S)	05-08	N/A	2850	1850
Ranger 4X4	01-04	N/A	2849	1849
Ranger 6X6	98-01	N/A	2848	1848
Ranger EV 4X4 Midsize	11-17	N/A	2847	1847
Ranger EV 4X4 Midsize	19	N/A	2857	1857
Ranger Diesel	15-17	N/A	2885	1854
Ranger ETX Midsize 4x4	15-16	N/A	2847/2857	1847
Turbo RZR XP	16-18	N/A	2858	1858
Turbo RZR XP	19-21	N/A	2858	-
Turbo RZR XP-4	16-18	N/A	2858	1858
Turbo RZR XP-4	19	N/A	2858	-

MODEL	YEAR	MID-MOUNT	FRONT MOUNT	WINCH MOUNT
SUZUKI				
ATV				
250 Quad Runner	99-02	2525	-	-
280 King Quad	91-98	2525	-	-
300 King Quad	93-98	2525	-	-
300 King Quad	99-00	2525	-	1520
300 King Quad	01-02	2525	-	1515
300 King Quad	03	2525	-	-
400 Eiger 2x4, 4x4	02-07	2520	-	-
400 King Quad	08-17	2520	-	1510
450 King Quad	06	-	3930	1530
450 King Quad	07-10	2530	3930	1530
450 King Quad	11-12	-	3930	1530
500 King Quad	09-20	2530	3930	1530
500 King Quad	21	-	3930	-
500 LFT Quad Runner	98-02	2520	-	-
500 Vinson	02-06	2520	3910	1505
500 Vinson	07	2015	3910	1505
700 King Quad 4x4	05-07	2530	3930	1530
700 King Quad 4x4	08-16	-	3930	1530
700 Twin Peaks	04-06	2315	-	1335
750 King Quad 4x4	08-17	2530	3930	1530
750 King Quad 4x4	18-19	2530	3930	-
750 King Quad 4x4	20-22	-	3930	-
UTV; SxS				
QUV	05	N/A	2820	-
TEXTRON OFF ROAD / BAD BOY BUGGIE				
ATV				
500 Alterra	18	2012	-	-
700 Alterra MudPro	18	2015	-	-
700 Alterra VLX	18	2015	3950	FIM
UTV; SxS				
Bad Boy Ambush 4X4	13-14	N/A	2873	-
Bad Boy Classic 4X4	06-10	N/A	2875	-
Bad Boy Instinct 4X4	13-14	N/A	2873	-
Bad Boy Recoil 4X4	13-14	N/A	2873	-
Bad Boy XT 4X4	10-11	N/A	2874	-
Bad Boy 900 Stampede	16	N/A	2877	FIM
Textron Off Road 900 Stampede	17	N/A	2877	FIM
Textron Off Road Stampede XTR 900	17	N/A	2877	FIM

MOUNT GUIDES

MODEL	YEAR	MID-MOUNT	FRONT MOUNT	WINCH MOUNT
Havoc X	18	N/A	2877	FIM
Stampede	18	N/A	2877	FIM
Stampede X	18	N/A	2877	FIM
Stampede 4	18	N/A	2877	FIM
Stampede 4X	18	N/A	2877	FIM
Prowler Pro (XT)	18-19	N/A	2878 ²	1878
Prowler Pro Crew (XT)	19	N/A	2878 ²	1878
Wildcat Trail (XT) (LTD)	18	N/A	2866	FIM
YAMAHA				
ATV				
250 Bruin	05-06	2620	-	-
350 Bruin 2x4, 4x4	04-06	2615	-	1615
350 Grizzly 2x4, 4x4	07-09	2615	3916	1615
350 Grizzly 2x4, 4x4	10-12	2615	3916	-
350 Grizzly 2x4, 4x4	13-14	2615	-	1615
350 Wolverine	95-05	2620	-	1655
400 Big Bear 2x4 4x4	97-06	2620	-	1650
400 Big Bear 2x4 4x4	07-11	2620	-	1640
400i Big Bear	07-09	2640	-	1640
400 Grizzly	05-07	-	3916	1615
400 Kodiak	94-98	2630	-	-
400 Kodiak	99	2620	-	-
400 Kodiak	00-02	2615	-	1620
400 Kodiak	03-07	2615	3916	1615
450 Grizzly	03-06	-	3916	1615
450 Grizzly	07-12	2615	3916	1615
450 Grizzly	13-14	2615	3916	-
450 Kodiak	03-12	2615	3916	1615
450 Kodiak	13-14	2615	-	-
450 Kodiak (SE)	18-20	2616	3921	FIM
450 Wolverine	06-08	2615	-	1660

MODEL	YEAR	MID-MOUNT	FRONT MOUNT	WINCH MOUNT
450 Wolverine	09	2615	-	-
550 Grizzly 4x4	07-08	-	3915	1625
550 Grizzly 4x4	09-12	2615	3915	1625
550 Grizzly 4x4	13-14	2610	3915	1625
600 Grizzly 4x4	98-01	2625	-	1610
660 Grizzly 4x4	02-08	2615	3914	1605
700 Grizzly 4x4	07-12	2615	3915	1625
700 Grizzly 4x4	13-14	2610	3915	1625
700 Grizzly 4x4	15	2610	-	1625
700 Grizzly 4x4	16	2610	-	1618
700 Grizzly 4x4	17	2610	3920	1618
700 Grizzly 4x4	19	2610	-	1618
700 Grizzly 4x4	20	2610	3920	FIW
700 Kodiak 4x4	16	2610	-	1618
700 Kodiak 4x4 (SE)	17-20	2610	3920	1618
Grizzly (LE) (SE) 4x4	17-20	2610	3920	1618
Grizzly 4x4 XT-R	20	2610	-	FIW
UTV, SxS				
450 Rhino	06-11	N/A	2835	1635
660 Rhino	04-08	N/A	2835	1635
700 Rhino	06-13	N/A	2835	1635
Viking	14-18	N/A	2836	1836
Viking	19-21	N/A	2836	-
Viking VI	15-18	N/A	2836	1836
Viking VI	19	N/A	2836	-
Wolverine	16-17	N/A	2837	1637
Wolverine	18	N/A	2837-A	-
Wolverine R-Spec (SE)	16-17	N/A	2837	1637
Wolverine X2 (SE)	19-20	N/A	2837-A	-
Wolverine X2 R-Spec (SE)	19-20	N/A	2837-A	-
Wolverine X4 (SE)	18-19	N/A	2837-A	-

Notes

Refer to the notes below for part numbers with a portion that has been superscripted (e.g. 2878²).

1	Winch mount is included with plow mount.
2	Front 2 inch receiver incorporated into plow mount.
3	Will only fit 2500 LB and smaller winches.
4	Will only fit 3500 LB and smaller winches.
5	Factory plow mount is copatible with our push tube. 2021 models must remove front bumper/guard.
6	If using GC1K Bumper, must also order p/n 2890-BRKTs.
7	Only compatible with our 4 bolt winches.

PLOW REPLACEMENT PARTS

HitchDoc PowerSports offers a variety of plowing accessories and replacement parts to keep you moving through the snow. Warranty information for all products included in this catalog is included on the back cover.

PART #	PRODUCT
WEAR BARS: 1/4" thick American steel, laser cut to proper specifications, hardware included with Eagle Wear Bars only	
2970	50" Eagle Plow Wear Bar
2972	54" Eagle Plow Wear Bar
2975	60" Eagle Plow Wear Bar
2978	66" Eagle Plow Wear Bar
2980	72" Eagle Plow Wear Bar
2981	80" Eagle Plow Wear Bar
2975V	60" Eagle V-Blade Wear Bars (2)
2978V	66" Eagle V-Blade Wear Bars (2)
2980V	72" Eagle V-Blade Wear Bars (2) (Red V-Blade Only)
2980BTV	72" Eagle V-Blade Wear Bars (2) (2960 Series V-Blade only)
2981BTV	80" Eagle V-Blade Wear Bars (2) (2960 Series V-Blade only)
2970CC48	48" Cycle Country Wear Bar
2972CC54	54" Cycle Country Wear Bar
2975CC60	60" Cycle Country Wear Bar
2978CC66	66" Cycle Country Wear Bar
2980CC72	72" Cycle Country Wear Bar
2970M50	50" Moose Wear Bar
2975M60	60" Moose Wear Bar
2972W54	54" Warn Wear Bar
2975W60	60" Warn Wear Bar
2980W72	72" Warn Wear Bar
BLADE ACCESSORIES	
2950	Plow Marker Set (2 markers)
2941	Left Plow Shield
2942	Right Plow Shield
2943	Country Plow Shield

PART #	PRODUCT
RUBBER FLAPS: 3/16" thick rubber flap, 6" tall, attaches to top of Eagle Blades to prevent snow blowing up while plowing, hardware included	
2945	50" Eagle Plow Rubber Flap
2948	54" Eagle Plow Rubber Flap
2946	60" Eagle Plow Rubber Flap
2949	66" Eagle Plow Rubber Flap
2947	72" Eagle Plow Rubber Flap
2951	80" Eagle Plow Rubber Flap
2946V	60" V-Blade Rubber Flaps (2)
2949V	66" V-Blade Rubber Flaps (2)
2947V	72" V-Blade Rubber Flaps (2)
2951V	80" V-Blade Rubber Flaps (2)
2929-18	Replacement V-Blade Front Flap
2960 Series V-Plow Specific Replacement Parts	
2964	V-Blade Hydraulic Upgrade Kit
2965	V-Blade Hydraulic to Manual Kit
2960-90	V-Blade Spring Kit
2960-06	Lifting Lug
HDW2260	Hydraulic Cylinder (1)
MISCELLANEOUS HARDWARE	
0200	Original Plow System Universal Push Tube Mount
0250	Blade Swivel
0251	Blade Position Pin Assembly
0251-3	Lifting Lug
0252	Blade Stop Kit (1 pair) with Hardware
0253	ATV Quick Latches & Hardware (2)
2986	Skid Replacement Hardware Only (1)
2987	Skid Hardware & Bracket
2989	Skid & Hardware
2990	Country & Standard Trip Springs & Hardware
2937-27	Red V-Blade Trip Springs & Hardware
HDW1879	UTV Push Tube Pin Kit



**#0250
BLADE SWIVEL**



**#0251
BLADE POSITION PIN ASSEMBLY**



**#0253
QUICK LATCHES & HARDWARE (2)**

**#2987
SKID HARDWARE & BRACKET**



**#2989
SKID & HARDWARE**



BLADE ADJUSTMENT

Eagle Motion Pac

Powered by a single ¾ inch chrome hydraulic shaft, the Eagle Motion Pac by KYB lets you hydraulically control your plow position so you can move snow exactly where you want it directly from the seat of your UTV.

Designed and manufactured for front mount UTV plow systems, each Eagle Motion Pac includes the wiring harness, hydraulic cylinder & hardware necessary to add this kit to the now KYB-ready UTV push tubes. Systems are available in different lengths to accommodate machines with tires or tracks. Some assembly required.

Part #	Description
2800	UTV KYB Kit (72" Country & 80" Standard Blades)
2800-15	UTV KYB Kit (66-72" Standard Blades)
2939-15	Replacement Motion Pac for 66 - 72" Standard Blades
2939-20	Replacement Motion Pac for 72" Country & 80" Standard Blades
2939U-WH	Replacement wire harness



Eagle Hand Lift Kit

Designed for the Original Eagle Plow System, the Eagle Hand Lift Kit lets you manually raise and lower your mid-mount ATV Plow System. Manufactured with a ¾ inch handle tube and ¾ inch lifting link that connects to the plow system's push tube, the Eagle Hand Lift Kit provides plenty of strength and leverage to raise and lower your blade. Lift height may vary from machine to machine, but the easy to set float and bumper strap make blade height adjustments a snap. The Eagle Hand Lift Kit is easy to install on any ATV and is fully adjustable. You can even adjust the height of the handle to increase leverage as necessary.

Part #	Description
2900	Hand Lift for Eagle Original ATV Plow System
2900-22	Linkage Rod with Ends
2909	Push Tube Bracket Kit
HDW2320	Replacement Bushing Kit



TALON TIRE CHAINS

Get a grip with Talon Tire Chains. The ladder style, hardened V-bar design with deep links that won't fall between the lugs means your ATV or UTV won't leave you out in the cold when running on ice, slush, or hard packed snow. Chains have four links between cross sections to increase grip even in the harshest winter conditions and are zinc plated for corrosion resistance.

Talon Tire Chains are sold in pairs and mount easily to the rear wheels of your ATV or UTV. With 5 size options available, they are sure to fit most factory and specialty ATV and UTV tires. When not in use, store Talon Tire Chains in the plastic case.

Installation is quick and easy. Simply lay chains flat. Then roll your machine onto the flattened chains. Cinch the chains appropriately and you're ready to go.



PART #	CLASS	CHAIN SIZE	TIRE SIZE(S)
3301	A	52" L x 14" W	22x8x11, 22x10x9, 22x10x10, 22x11x8, 22x11x9, 22x11x10, 25x11x8
3302	B	52" L x 14.5" W	24x9x11, 24x10x11, 24x11x10, 25x8x12
3303	C	56" L x 16" W	24x13x9, 25x10x12, 25x11x10, 25x12x9, 25x12x10, 25x13x9, 25x13.5x12
3304	C+	61" L x 16" W	Oversized 26" tires
3305	D	66" L x 16" W	Oversized 27" tires
Part # HDW1888 – Replacement Tire Chains Case			

EAGLE WINCH

Get in there, get dirty, get stuck & get the Eagle Winch to get you out of any tough situation. Each winch is water-resistant with a sealed construction to keep the harshest elements out. Eagle Winches are a durable utility tool for use by off-road enthusiasts around the globe on the trails, in the fields or back in the woods.

Winches are manufactured with a full metal composition & a hardened triple planetary gear system that transmits torque to a permanent magnet motor. This system offers superior controls with the handlebar rocker switch or optional wireless remote kit & can also free spool out.



Every Eagle Winch is designed for easy mounting with either a 2- or 4-hole mounting design. ATV/UTV mounts made from 7-gauge, American steel are sold separately & can be found in the Mount Guides on [page 12](#).

#1920
Eagle 2,500 lb.
Steel Cable Winch



#1925
Eagle 3,500 lb.
Steel Cable Winch



#1920R
Eagle 2,500 lb.
Synthetic Rope Winch



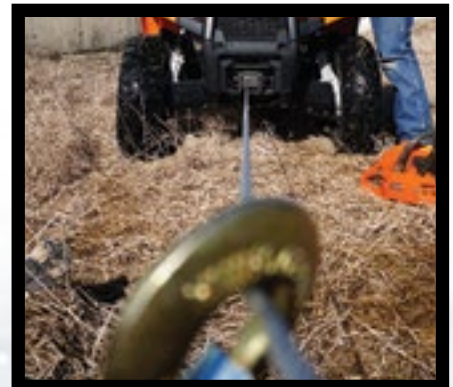
#1926
Eagle 2,000 lb.
Steel Cable Winch
(2-Hole Mount Design)



#1923
Eagle 2,000 lb.
Nylon Strap Winch



#1930
Eagle 4,500 lb.
Steel Cable Winch



EAGLE WINCH

PART #	TOW LIMIT	WINCH DIMENSIONS	CABLE/ ROPE DIMENSIONS	INCLUDED ITEMS
1923	2,000 lbs.	10" L x 4.25" H x 4" W	3' x 1 1/2"	Winch, <u>nylon strap</u> , hook, battery & motor cables, solenoid, handlebar rocker switch & mount, mounting hardware
1926	2,000 lbs.	12.5" L x 4.25" H x 4" W	50' x 5/32"	Winch, <u>steel cable</u> , rubber cable stop, heavy-duty fairlead, battery & motor cables, solenoid, handlebar rocker switch & mount, safety pull strap, mounting hardware, snatch block, hook. *Note: 2-hole mount design
1920	2,500 lbs.	12.75" L x 4.25" H x 4.06 W	46' x 7/32"	Winch, <u>steel cable</u> , rubber cable stop, heavy-duty fairlead, battery & motor cables, solenoid, handlebar rocker switch & mount, safety pull strap, mounting hardware, snatch block, hook
1920R	2,500 lbs.	12.75" L x 4.25" H x 4.06 W	50' x 3/16"	Winch, <u>synthetic rope</u> , rubber cable stop, aluminum hawse, battery & motor cables, solenoid, handlebar rocker switch & mount, safety pull strap, mounting hardware, snatch block, hook
1920S	2,500 lbs.	12.75" L x 4.25" H x 4.06 W	3' x 1 1/2"	Winch, <u>nylon strap</u> , heavy duty fairlead, hook, battery & motor cables, solenoid, handlebar rocker switch & mount, mounting hardware
1925	3,500 lbs.	13.25" L x 4.19" H x 4" W	43' x 7/32"	Winch, <u>steel cable</u> , rubber cable stop, heavy-duty fairlead, battery & motor cables, solenoid, handlebar rocker switch & mount, safety pull strap, mounting hardware, snatch block, hook
1925R	3,500 lbs.	13.25" L x 4.19" H x 4" W	50' x 3/16"	Winch, <u>synthetic rope</u> , rubber cable stop, aluminum hawse, battery & motor cables, solenoid, handlebar rocker switch & mount, safety pull strap, mounting hardware, snatch block, hook
1925S	3,500 lbs.	13.25" L x 4.19" H x 4" W	3' x 1 1/2"	Winch, <u>nylon strap</u> , heavy duty fairlead, hook, battery & motor cables, solenoid, handlebar rocker switch & mount, mounting hardware
1930	4,500 lbs.	14.5" L x 4.87" H x 4.5" W	42' x 7/32"	Winch, <u>steel cable</u> , rubber cable stop, heavy-duty fairlead, battery & motor cables, solenoid, handlebar rocker switch & mount, safety pull strap, mounting hardware, snatch block, hook

Wireless Remote Kit - #1915

Easily operate your Eagle Winch from up to 50 feet away with a simple handheld remote transmitter and a receiver that attaches to the winch system in minutes.

The Eagle Winch Remote Kit is designed for ATVs and UTVs with front or rear mounted winches using a 12V or 24V electrical system but is not intended for construction or industrial use winches such as those used on cranes or with other construction equipment.

Eagle Winch Replacement Parts

Eagle Winches are made to work hard & withstand the harsh elements. Even so, some parts still wear out through normal usage. Refer to the table at right. Additionally, warranty information is included at the end of this catalog.

REPLACEMENT PARTS

1900	Heavy Duty Fairlead
1910	Snatch Block & Hook
1911	Switch & Replacement Solenoid Kit
1912	42' cable rated for 2,500 lbs. 3/16" diameter cable with G43 hook
1913	Rocker Switch
1914	Replacement Solenoid
1916	Replacement Cable Hook
1917	2,500 lb. 3/16" Rope Only
1918	Rubber Cable Stop
1919	Aluminum Hawse Only with Hardware
1921	2,500 lb. 3/16" Rope & Aluminum Hawse
1915	Wireless Remote Kit
1922	Remote & Rocker Switch Control Splitter

RACKS & CARRIERS

Front Racks

Now for both composite & tubular!

This is no ordinary basket. Manufactured from 3/4 inch, 16-gauge square American steel tubes and a laser cut mesh basket, these racks add rugged front hauling space without impairing the driver's vision. Racks are powder coated with a black rubberized finish to take whatever you throw at it. Universal mounting hardware is included for easy mounting to either tubular or composite racks.

PART#	DESCRIPTION	DIMENSIONS
4880	Universal Front Rack	37.25" W x 12.75" L x 6" D
4881	Slotted Front Rack	37.25" W x 12.75" L x 6" D



Rear Racks

Now for both composite & tubular!

Increase ATV hauling capacity with any of the rear racks. Manufactured from 3/4 inch square, 16-gauge steel tube and powder coated with a black rubberized finish, these rear racks combine the ultimate in strength and versatility. Universal mounting hardware & instructions included.

PART#	DESCRIPTION	DIMENSIONS
4879	Universal Rear Rack	40.5" W x 22.75" L x 6" D
4883	Rear Drop Rack	40.75" W x 26.5" L x 12.75" D



Gas Can Carriers

Don't get left behind. Transport fuel safely & efficiently with a steel framed gas can carrier. Choose a 1 or 2 1/2 gallon gas can carrier. The simple design bolts directly to most ATVs with a metal front or rear rack. No drilling required and all hardware required is included along with instructions. Inside dimensions will fit a variety of 1 or 2 1/2 gallon fuel cans.

- Bolt-on, no cut mounting
- 5/8" round 16-gauge wall steel tube
- Formed 11-gauge steel bracket & base
- Powder coated jet black
- Gas can not included

#4235



#4234



PART #	DESCRIPTION (INSIDE DIMENSIONS)
4234	1 Gal. Gas Can Carrier (7" W x 9" L x 5 3/4" H)
4235	2 1/2 Gal. Gas Can Carrier (8 3/4" W x 12 5/8" L x 5" H)

RACKS & CARRIERS

Chainsaw Holder

Simply loosen the wing nut of this chainsaw holder, slide the chainsaw bar in, tighten & ride away! The holder is equipped with a bar guard for added rider protection & safety. The holder is heavy duty & versatile holding a variety of chainsaws with bars up to 24" long.

- Universal bolt-on bracket fits most ATVs
- Attaches to both steel & composite racks
- Powder coated jet black
- Made in the USA
- Hardware & instructions included



PART #	DESCRIPTION
4501	Steel Chainsaw Holder



PART #	DESCRIPTION
2952	GPS / Light Beacon Pole

Beacon Extension Pole

Raise safety lights or GPS globes off your ATV or UTV roughly 30 inches from your rack or bed. The 6" diameter variable mounting plate & grade 5 hardware allow for easy installation and position adjustments while also providing a secure base once ready. Pole itself is manufactured from 1" tubing that attaches the top & bottom plate. Light not included.



RECEIVERS

Made in Minnesota, USA, with American steel, these receivers are tough enough to tow through the roughest environments. With a jet black powder coat finish, they will even hold up against corrosion & rust. Hardware & instructions included.

PART #	NAME	DESCRIPTION
4530	3-Way Compact Hitch	$\frac{3}{8}$ " steel laser cut with holes for a ball or pull pin & tow loops
4841	Bolt-On 2 Way Riser Hitch	$\frac{5}{16}$ " steel with 3" offset & a $\frac{1}{2}$ " thick tow loop
4533	3-Way 1 $\frac{1}{4}$ " Receiver	Bolts onto the frame with options for ball, clevis pin & tow loop, this reversible receiver puts your 1 $\frac{1}{4}$ " receiver to work with heavy gauge steel
4877	Bolt-On Hitch 1 $\frac{1}{4}$ " Receiver Converter	Easily attach to frame for converting to receiver hitch, 7-gauge welded mount plate & 12-gauge reinforced receiver tube
4890	Standard 1 $\frac{1}{4}$ " Receiver	$\frac{3}{8}$ " steel & fits a 1" ball bolt, includes receiver, $\frac{1}{2}$ " hitch pin & hair pin
4676	2-Way 1 $\frac{1}{4}$ " Receiver	$\frac{1}{2}$ " pin hole & a $\frac{3}{4}$ " ball bolt hole for using a ball or clevis pin without changing hitches, $\frac{1}{4}$ " steel with a 1" offset
4734	2" Offset 2-Way 1 $\frac{1}{4}$ " Receiver	$\frac{1}{2}$ " pin hole & a $\frac{3}{4}$ " ball bolt hole for using a ball or clevis pin without changing hitches, $\frac{1}{4}$ " steel with a 2" offset
4531	1 $\frac{1}{4}$ " to 2" Adapter Receiver	Change your 1 $\frac{1}{4}$ " receiver to a 2" without sacrificing strength, welded heavy duty steel with $\frac{1}{2}$ " hitch pin included
4532	3-Way 2" Receiver	Tow or pull as this reversible receiver has holes for a ball, pin & tow loop, includes a $\frac{5}{8}$ " hitch pin, reversible for varying heights
4895	4" Offset 2" Receiver	Heavy duty $\frac{3}{8}$ " steel 2" receiver with a 4" offset, includes hitch pin & hair pin

Note: All hitches & receivers include mounting hardware.



#4841
BOLT-ON 2-WAY
RISER HITCH



#4877
BOLT-ON HITCH
CONVERTER



#4890
STANDARD
1 $\frac{1}{4}$ " RECEIVER



#4676
2-WAY
1 $\frac{1}{4}$ " RECEIVER



#4734
OFFSET 2-WAY
1 $\frac{1}{4}$ " RECEIVER



#4530
3-WAY COMPACT
HITCH



#4531
1 $\frac{1}{4}$ " TO 2"
ADAPTER RECEIVER



#4533
3-WAY 1 $\frac{1}{4}$ " RECEIVER

RECEIVER HITCH MOUNTS

Mount our 2" receiver hitches directly to your frame without drilling! Manufactured from heavy grade steel & powder coated with a jet black finish, they're sure to stand up to your toughest jobs. Receiver Hitch Mounts attach with ease to a variety of ATVs & UTVs.

- No drilling or plastic cutting
- Easy bolt-on install with included hardware & instructions
- Will not affect ground clearance

MODEL	YEARS	REAR RECEIVER	FRONT RECEIVER
ARCTIC CAT			
Prowler Pro	20	OEM 2"	2878 ¹
Prowler Pro Crew	20	OEM 2"	2878 ¹
CAN/AM			
Outlander	06-14	5704	-
Renegade 800	07-11	5701	-
Maverick 1000	13-14	5705	-
CAT			
CUV82	18-19	OEM 2"	2878 ¹
CUV85	19	OEM 2"	2878 ¹
CUV102D	18-19	OEM 2"	2878 ¹
CUV105D	19	OEM 2"	2878 ¹
HONDA			
Foreman 500	04-13	5717	-
Rancher 350	00-06	5717	-
Rancher 400	04-07	5717	-
Rancher 420	07-13	5717	-
Rancher 420i	09-13	5716	-
Rincon 650	03-13	5716	-
Rubicon 500	00-13	5717	-
Talon X 1000	19-21	5864	5863
Talon R 1000	19-21	5864	5863
JOHN DEERE			
Gator HPX	04-13	5960	-
KAWASAKI			
Brute Force 750	11-13	5725	-
Mule 610	05-13	5961	-
Mule 400 SX (XC)(SE)(LE)	17-21	-	4682
Mule 700 Pro MX	19-21	OEM 2"	4689

MODEL	YEARS	REAR RECEIVER	FRONT RECEIVER
ODES			
Comrade	17-19	4685	-
POLARIS			
RZR 900	12-14	5730	-
RZR 900-4	12-14	5730	-
1000 Ranger	21	OEM 2"	2886 ¹
1000 Ranger Crew	21	OEM 2"	2886 ¹
1000 XP Ranger Full Size 4x4	21	OEM 2"	2886 ¹
1000 XP Ranger Full Size 4x4 Crew	21	OEM 2"	2886 ¹
SUZUKI			
King Quad 500	11-13	5720	-
King Quad 750	08-13	5720	-
TEXTRON			
Prowler Pro (XT)	18-19	OEM 2"	2878 ¹
Prowler Pro Crew (XT)	19	OEM 2"	2878 ¹
YAMAHA			
Big Bear 400i	07-12	5711	-
Grizzly 350	07-09	5711	-
Grizzly 350i	07-13	5711	-
Grizzly 400 / 450	07	5711	-
Grizzly 550	09-13	5712	-
Grizzly 700	08-13	5712	-
Kodiak 400i / 450i	06	5711	-



¹ Denotes a plow mount with a front 2" receiver incorporated into it.

ATV ACCESSORIES

Hand Shifters

Whether you're wearing big boots, are partially submerged or unable to operate a foot shifter, this clamp-around design will turn your foot shifter into a hand shifter in seconds. The easy mounting, sturdy construction hand shifter attaches to virtually any foot shifting machine & gives riding enthusiasts the ultimate gear-shifting experience, no matter the situation!

- No drill assembly & easy bolt-on install
- 3/4" round American steel tubing
- Made in Minnesota, USA



PART #	DESCRIPTION
4632	Universal 15" Hand Shifter
4620	Universal 22" Hand Shifter
4698	20" Hand Shifter for Suzuki Models
4054	20" Hand Shifter for Yamaha YFM Big Bear 87-09



License Plate Holder

Stay legal with this American made, steel license plate holder. With the included hardware, it attaches in seconds to any 1" or narrower tubing on the front or back of your ATV or UTV.

- Fits most 2 or 4 hole license plates
- 7 3/4"x4" outside diameters, 11-gauge steel
- Includes 2 rubber coated steel clamps

PART #	DESCRIPTION
4541	Black License Plate Holder
4541W	White License Plate Holder



TOWING

HitchDoc Utility Sled - #8100

Whether you're heading out to camp, ice fish, hunt or split wood, this steel framed utility sled will keep up! Effortlessly unfold, set up, load down & tow behind your snowmobile in deep snow or ATV/UTV over ice.

Easy, bolt together assembly allows this product to get right to work & it folds up for easy storage during the off season. Bring efficiency to your voyage with the HitchDoc Utility Sled.

- 45" x 24" deck space
- 9" x 24" perforated standing platform
- 33 1/2" tall & 93" long when fully set up
- 8 1/2" tall & 56" long when collapsed
- 3/4" square steel tube frame
- 14 gauge formed steel skis
- Rubber cushioned hitch with snow shield
- Some assembly required
- All hardware included

PART #	DESCRIPTION
8105	Replacement Ski
8130	Replacement Tongue & Hitch
8131	Replacement Hitch
8100	Folding Utility Sled



Tie Down Bars & Cranks

Designed to work with more trailers. Being 45.6" wide, the tie down bars secure skis directly to the trailer. Powder coated with a black finish then paired with rubber end caps to withstand the elements & not scratch machine skis. The half inch center crank hole pairs perfectly with either a 3 1/2" or 6 1/2" tie down crank.

- Center hole designed for 1/2" diameter cranks
- Cranks are 1/2" diameter & zinc coated
- Note: Bars & cranks are sold separately



PART #	DESCRIPTION
3327	1 1/4" square tie-down bar
3328	1"x2" rectangle tie-down bar
3330	6 1/2" tie-down crank
3331	3 1/2" tie-down crank

MOTORCYCLE HITCHES

Designed for **your bike**. Manufactured for **your safety**. Owner, Brad Mohns, designed & fabricated the first HitchDoc Motorcycle Hitch in preparation for the Sturgis Motorcycle Rally's 50th Anniversary in 1990. From the first hitch to the one you can purchase today, the philosophy behind using solid, American steel & matching the aesthetics of the bike has not changed.

- Standard (visible ball & mount plate) & receiver style hitch mounts available
- Hitch mounts solidly to the frame without any drilling (most models)
- Innovative clatter-free receiver feature improves touring experience by not rattling with the vibrations of the road/bike
- Inspected against the highest quality standards for the safest addition to your riding experience
- Minnesota made with American steel & decades of manufacturing experience
- Visible portion of hitches are triple plated show chrome while some hidden portions have a baked-on, powder coat finish
- Designed & manufactured for safety & eye-appeal
- Hitches fit models of motorcycles across 10 brands & years 1980 to present
- Hole for ball is $\frac{3}{4}$ " & the receiver shaft is $1\frac{1}{8}$ " with a $1\frac{7}{8}$ " chrome ball



MOTORCYCLE HITCH MOUNTS

NAME	MODEL	YEARS	STANDARD	VERTICAL RECEIVER
HARLEY DAVIDSON				
DYNA/SUPER GLIDE				
FXLR	Low Rider Custom	87-94	15020	-
FXR	Super Glide	82-86	15050	-
FXR	Super Glide	87-94	15020	-
FXRS	Super Glide	84	15020	-
FXRS	Super Glide - 5 Speed	84	15050	-
FXRS	Super Glide	85	15050	-
FXRS	Super Glide	86-88	15020	-
FXRT	Sport Glide	85-92	15040	-
FXRP	Super Glide	84-94	15020	-
FXRC	Low Rider Custom	85	15050	-
FXD	Dyna Super Glide	95-05	15070	-
FXD	Dyna Super Glide	06-10	15075	-
FXDL	Dyna Low Rider	95-05	15070	-
FXDX	Dyna Super Glide	99-05	15075	-
FXDB	Dyna Street Bob	06-08	15075	-
FXDWG	Dyna Wide Glide	93-05	15060	-
FXDWG	Dyna Wide Glide	06-08	15075	-
FXDF	Dyna Fat Bob	08	15085	-
ELECTRA GLIDE/ULTRA				
FLHS	Electra Glide	80-08	15170	15180
FLHTC	Electra Glide Classic	83-08	15170	15180
FLHTC	Electra Glide Classic	09-13	-	15220
FLHT	Electra Glide Standard	83-08	15170	15180
FLHT	Electra Glide Standard	09-13	-	15220
FLHT	Electra Glide Standard	20-21	-	15225
FLHTCU	Electra Glide Ultra Classic	90-08	15170	15180
FLHTCU	Electra Glide Ultra Classic	09-13	-	15220
FLHTCU	Electra Glide Ultra Classic	14-18	-	15225
FLHTCUL	Electra Glide Ultra Classic Low	14-18	-	15225
FLHTK	Electra Glide Ultra Limited	10-13	-	15220
FLHTK	Electra Glide Ultra Limited (No Light at Bottom of Fender)	14-18	-	15225
FLHTK	Electra Glide Ultra Limited (With Light at Bottom of Fender)	14-18	-	15216

NAME	MODEL	YEARS	STANDARD	VERTICAL RECEIVER
FLHTK	Ultra Limited (No Light at Bottom of Fender)	2019	-	15225
FLHTK	Ultra Limited (No Light at Bottom of Fender)	20-21	-	15226
FLHTK	Ultra Limited (With Light at Bottom of Fender)	19-21	-	15216
FLHTKL	Ultra Limited Low	15-18	-	15225
ROAD GLIDE				
FLTR	Road Glide	98-08	-	15186
FLTR	Road Glide	09-13	-	15230
FLTRX	Road Glide	15-21	-	15216*
FLTRK	Road Glide Limited	20-21	-	H15225
FLTRX	Road Glide Custom	10-13	-	15214*
FLTRXS	Road Glide Special	15-21	-	15216*
FLTRU	Road Glide Ultra	09-13	-	15230
FLTRU	Road Glide Ultra	16-18	-	15225
ROAD KING				
FLHR	Road King	94-08	15170	15180**
FLHR	Road King	09-13	-	15220
FLHR	Road King	14-19	-	15225
FLHR	Road King	20-21	-	15226
FLHRCl	Road King Classic	00-08	15170	15180**
FLHRC	Road King Classic	09-13	-	15220
FLHRS	Road King Custom	04-08	15170	15180**
FLHRXS	Road King Special	17-21	-	15216
SOFTAIL				
FXSTD	Deuce	00-06	15200	-
FXDF	Fatbob	06-08	15085	-
FLSTF	Fat Boy	90-99	15100	-
FLSTF	Fat Boy	00-06	15140	15155
FLSTF	Fat Boy	07-17	-	15116
FLSTFB	Fat Boy Lo	10-16	-	15116
FLSTFBS	Fat Boy Special	16-17	-	15116
FLST	Heritage Softail	06	15143	15158
FLSTC	Heritage Softail Classic	94-96	15110	-
FLSTC	Heritage Softail Classic	97-99	15120	-
FLSTC	Heritage Softail Classic	00	15141	15156

* = Horizontal Receiver ** = If no rear bumper, order part number 15186 (Harley Davidson only)

MOTORCYCLE HITCH MOUNTS

NAME	MODEL	YEARS	STANDARD	VERTICAL RECEIVER
SOFTAIL				
FLSTC	Heritage Softail Classic	01-02	15142	15157
FLSTC	Heritage Softail Classic	03-08	15143	15158
FLSTC	Heritage Softail Classic	09-17	-	15105
FLHC	Heritage Softail Classic	18-21	-	15108
FLSTS	Heritage Springer	00-02	15144	15159
FLSTS	Heritage Springer	03-08	15145	15160
FXSTC	Softail Custom	88-05	15090	-
FXSTC	Softail Custom	06-08	15095	-
FLSTN	Softail Deluxe	05-08	15143	15158
FLSTN	Softail Deluxe	09-17	-	15105
FLDE	Softail Deluxe	18-20	-	15108
FXSTS	Softail Springer	90-99	15130	-
FXSTS	Softail Springer	00-02	15144	15159
FXSTS	Softail Springer	03-08	15145	15160
FXST	Softail Standard	00	15141	15156
FXST	Softail Standard	01-02	15142	15157
FXST	Softail Standard	03-08	15143	15158
FLSTSC	Springer Classic	03-08	15145	15160
FXSTS	Springer Softail	00-02	15144	15159
FXSTS	Springer Softail	03-08	15145	15160
SPORTSTER				
XLH	Sportster	79-93	15000	-
XLH	Sportster	94-03	15010	-
XLH	Sportster (No 883)	04-09	15015	-
STREET GLIDE				
FLHX	Street Glide	06-08	-	15175
FLHX	Street Glide	09	-	15210
FLHX	Street Glide	10-13	-	15214*
FLHX	Street Glide	14-21	-	15216*
FLHXS	Street Glide Special	14-21	-	15216*
TRIKES				
FLRT	FreeWheeler	14-18	-	15239
FLHT-CUTG	Tri-Glide (has to have threads)	09-11	-	15235
FLHT-CUTG	Tri-Glide (w/o threads)	11-18	-	15238
FLHT-CUTG	Tri-Glide Ultra	20-21	-	15235-A

* = Horizontal Receiver

** = If no rear bumper, order part number 15186 (Harley Davidson only)

MODEL	YEARS	STANDARD	VERTICAL RECEIVER
OTHER BRANDS			
HONDA			
Goldwing 1500 (Interstate)	88-00	-	15300
Goldwing 1500 (Interstate) with 1-1/2" Offset	88-00	-	15310
Goldwing 1800	00-10	-	15290
Goldwing 1800	12-15	-	15285
Magna 1100	94-03	15440	-
Shadow ACE 1100	87-00	15270	-
Shadow Spirit 1100	87-00	15270	-
Shadow ACE Tourer (Hard Bags)	98	15260	-
Shadow Aero 1100	85-07	15280	-
Valkyrie (Guard Rail)	98-13	15370	15420
Valkyrie (Hard Bags)	98-13	15350	15400
Valkyrie (Leather Bags)	98-13	15340	15390
Valkyrie (Leather-Lyke Bags)	98-13	15360	15410
Valkyrie (No Bags)	98-13	15330	15380
VTX 1300 Custom (Backrest & Luggage Rack)	04-09	15465	-
VTX 1300 (No Backrest & Luggage Rack)	04-09	15470	-
VTX 1300 Retro (Long Fender)	04-09	-	15480
VTX 1800 Custom (Backrest & Luggage Rack)	04-08	15465	-
VTX 1800 Custom (No Backrest & Luggage Rack)	04-08	15470	-
VTX 1800 Retro (Long Fender)	04-08	-	15480
INDIAN			
Challenger (Dark Horse) (Limited)	20-21	-	15911
Chief	02-03	-	15900
Chief (Classic) (Dark Horse) (Vintage)	14-20	-	15910-E
Chieftain (Classic) (Dark Horse) (Elite) (Limited)	14-21	-	15910-E
Roadmaster (Classic) (Dark Horse) (Elite) (ICON) (Limited)	14-21	-	15910-E
Springfield (Dark Horse)	16-21	-	15910-E
Vintage (Dark Horse)	2021	-	15910-E
KAWASAKI			
Concours	86-06	-	15530
Vaquero 1700	11-17	-	15820
Voyager 1200	86-03	-	15540
Voyager 1300	84-86	-	15550
Voyager 1700	09-17	-	15815

MOTORCYCLE HITCH MOUNTS

MODEL	YEARS	STANDARD	VERTICAL RECEIVER
Vulcan 1500	87-08	-	15520
Vulcan 2000 (Saddle Bags)	04-10	-	15515
Vulcan 2000 (No Saddle Bags)	04-10	-	15516
Vulcan Classic LT	06-10	-	15514
Vulcan Classic 1500	07-17	15570	-
Vulcan Classic 1600	03-06	-	15505
Vulcan Nomad 1500	98-04	-	15510
Vulcan Nomad 1600	05-08	-	15525
Vulcan Nomad 1700	09-14	-	15815
SUZUKI			
Boulevard C90T (No Bags)	05-10	-	15680 3
Boulevard C90T (Soft Bags)	05-10	-	15682
Boulevard C90T (Hard Bags)	05-10	-	15682
Intruder 1500 (No Bags)	98-04	-	15680 3
Intruder 1500 (Soft Bags)	98-04	-	15680 5
Intruder 1500 (Hard Bags)	98-04	-	15680 7
TRIUMPH (No Tour Models) *Factory bags ONLY - will NOT work with aftermarket bags*			
Rocket III (Saddle Bags)	05-09	15990	-
Rocket III (No Saddle Bags)	05-09	15995	-
Rocket III Classic (Saddle Bags)	06-09	15990	-
Rocket III Classic (No Saddle Bags)	06-09	15995	-
Rocket III Roadster (Saddle Bags)	11-17	15990	-
Rocket III Roadster (No Saddle Bags)	11-17	15995	-

MODEL	YEARS	STANDARD	VERTICAL RECEIVER
VICTORY			
Cross Country	10-17	-	15780
King Pin (No Saddle Bags)	04-12	-	15775
King Pin (Saddle Bags)	04-12	-	15770
V92 C	98-03	15760	-
V92 TC	02-06	15760	-
V92C Deluxe	01-02	15760	-
Vision (No Arlene Ness Models)	07-17	-	15765
YAMAHA			
Road Star Silverado	99-14	15580	-
Road Star (Chrome Support Brackets)	99-14	15590	-
Roadliner	06-14	-	15585
Royal Star Classic	96-98	15610	-
Royal Star Tourer Deluxe	97-09	15600	15605
Royal Star Venture	99-13	15600	15605
Star Eluder (GT)	2018	-	15665*
Star Venture (Transcontinental)	2018	-	15665*
Stratoliner	06-15	-	15595
Virago 1100	86-99	15640	-
V-Star 1100 Classic	00-10	-	15660
V-Star 1100 Custom	98-11	15670	-
V-Star 1100 Silverado	04-10	-	15660
V-Star 1300 & Tourer	07-17	-	15625

MANUFACTURER WARNING

Do not exceed the motorcycle manufacturer's Gross Vehicle weight limit when loading and pulling ANY trailer with ANY motorcycle. ALL HitchDoc motorcycle trailer hitches have a MAXIMUM tongue weight load of 40 pounds. Tongue weight must NEVER EXCEED 10% of the GROSS TRAILER weight including ALL CONTENTS AND CARGO.

Motorcycle performance is always affected by adding a trailer to a motorcycle. Always ride in a conservative and safety conscience manner when towing a trailer with a motorcycle.

- Allow extra distance for acceleration and braking when pulling a trailer.
- Always decrease from normal cornering speeds when pulling a trailer with a motorcycle.
- When riding in groups with a motorcycle trailer, always ride at the rear of the group to minimize group accident exposure.
- Never exceed motorcycle manufacturer, trailer manufacturer, or hitch manufacturer's limits for gross weight or tongue weight.
- Never exceed posted speed limits for vehicles when pulling trailers which can be different than non-towing vehicles.
- Many states exclude, by law, vehicles towing trailers from the left hand, or so-called fast lanes.

- Always use approved safety chains, and have them securely attached. Cross the safety chains under the tongue of the trailer so that the tongue will not drop to the road if it becomes separated from the hitch. Always leave just enough slack so that you can turn with your rig. And, never allow safety chains to drag on the ground.
- Trailer tire pressure should be inflated to maximum allowable pressure, unless otherwise recommended by the trailer manufacturer. Rear motorcycle tire pressure should be inflated to maximum allowable pressure (refer to tire side wall marking) and checked periodically.
- Towing a trailer requires a certain amount of experience. After loading the trailer, weigh the trailer and then the tongue separately, to see if the weights are proper.
- If trailer sways or bounces while towing, SLOW DOWN BY REDUCING SPEED GRADUALLY and STOP TOWING immediately. Unless cause can be determined, i.e. shifted load, low tire pressure, etc., which can be corrected, do not resume towing.

*Our hitches are designed to fit on stock bikes.

*Our hitches are not recommended for use with one wheeled trailers.

SNOWMOBILE TOOLS

Snowmobile Shop Dolly - #8010

Originally designed in 1966 & redesigned in recent years, this patented collapsible Shop Dolly will make snowmobile moving a breeze! The U-shaped handle design & adjustable strap will hook to your machine & easily move it inside the shop or out on the trailer with the large, steel rimmed rubber tires.

This Shop Dolly can be stood upright on its 'feet' or collapsed down for simple storage in the off-season.

- Built from steel tubing
- Reinforced with 2 pairs of 1" wide, 7-gauge steel braces
- Pneumatic tires with steel rims
- Accommodates sleds ranging from 38" to 51" wide
- Adjustable legs, arms & strap
- Some assembly required



PART #	DESCRIPTION
8010-1	Shop Dolly pad, rod & pin replacement part
8015	Shop Dolly wheel replacement

PART #	DESCRIPTION
8018	Shop Dolly lift strap with hook replacement

Snowmobile Work Stand - #8030

The work stand is the ultimate addition to a snowmobile enthusiast's shop or garage. This work stand is perfect for replacing the track, changing carbides, adjusting suspension, or storing your sled. It has enough lift to raise any sled but still collapses for easy off season storage.

The Snowmobile Work Stand was designed in the snowy Midwest with strong, rectangular tubing, manufactured in the USA & finished with a corrosion resistant, powder-coat finish.

- Lifts to roughly 31" & collapses to 5 1/2"
- Legs & top composed of 1 1/2"x1" steel tubing
- Base composed of 2"x1" steel tubing
- Long handled crank jack makes for easy lifting
- 3 7/8" by 4 7/8" rectangular lifting pad
- Grade 5 hardware included
- Some assembly required
- Optional wheel kit available (Part #8035 shown in photo)



PART #	DESCRIPTION
8035	Work Stand non-locking, swivel wheel kit
8032	Work Stand rubber lift pad replacement

PART #	DESCRIPTION
8028	Work Stand replacement jack
8031	Work Stand replacement crank jack handle

SNOWMOBILE TOOLS

Stands & Slides

Make moving & storing your snowmobile a breeze with sled slides or steel track risers. Easily lift your track for maintenance or storage with three styles of adjustable track stands. Secure the stand at the proper height for an easy, one-person lift. Warm Up Stand (8072) & Lever Lift Stand (8074) provide a full shield from any track debris when servicing.

Sled slides come in steel or colored, formed plastic; pick from black, blue or red. Slides come as a set of three with two designed for the skis & one for underneath the track. Move machines across smooth surfaces alone & for precise placement.

PART #	DESCRIPTION
8058	Blue Plastic Sled Slides
8056	Black Plastic Sled Slides
8060	Red Plastic Sled Slides
8070	Black Steel Sled Slides
8074	Lever Lift Stand
8072	Warm Up Stand
8040	EZ Trac Stand



#8070 STEEL SLED SLIDES



#8072 WARM UP STAND



#8074 LEVER LIFT STAND

Clutch Pullers

Clutch pullers are made from high carbon, hardened steel & machined to precise tolerances, providing years of durable shop use for many makes & models of snowmobiles. Simply prep the clutch, twist the puller into place & use a matching socket for easy removal. Heavy-duty steel with a black oxidized finish.

Clutch Button Retainer Clips come as a set of three & an integral part of removing the clutch on Ski-Doo T.R.A. machines. Steel & zinc coated clips hold buttons in place during assembly & disassembly.

PART #	DESCRIPTION
9320	Clutch Button Retainer Clips (3)
9321	Arctic Cat Clutch Puller – 9 bolt -Fits newer Arctic Cat clutches
9322	Arctic Cat/Comet Clutch Puller -Fits all Arctic Cat clutches
9323	Polaris Clutch Puller -99-01 XCR 700/800 Fuji -00-01 Domestic Twins 500/600/700/800 -99-01 Edge Pro X 440
9324	Polaris Clutch Puller -97-99 Domestic Twins 440/500/600/700

PART #	DESCRIPTION
9325	Polaris/Comet Clutch Puller
9327	Ski-Doo T.R.A Clutch Puller -Through 2004 -95 MXZ, all 670 & all triples
9328	Ski-Doo T.R.A Clutch Puller -94 MXZ, all 583 engines & most MX's
9329	Yamaha Clutch Puller -86 & newer YPZ-YXR
9332	Ski-Doo E-Tek Clutch Puller

#9321



#9322



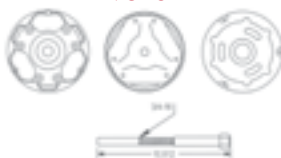
#9323



#9324



#9325



#9327 & #9332



#9328



#9329



DIRTMASTER

Tow around the field, through the woods, or a suburban backyard with an ATV, car, lawn tractor, truck or UTV. The DirtMaster by Kwik-Way is the ultimate towable backhoe! With unlimited mobility, minimal ground disturbance during operation & easy to master joysticks, any operator can hop on & get right to work. The DirtMaster comes standard with two pairs of stabilizers & a best-in-class Honda motor. It's sure to make short work of your next project!

More information & product specifications can be found at www.KwikWayBlades.com.

- Front hydraulic stabilizer can be positioned together or independently
- Rear manual stabilizers can be secured with a pin during use or transport
- 2" solid ball & lock pins ensure safe transportation
- Tow at speeds up to 45 mph depending on terrain

CONQUER ANY TERRAIN with the ultimate **TOWABLE BACKHOE!**



PART #	DESCRIPTION
KW55-32710	DirtMaster with 12" bucket
KW53-00121	9" Bucket
KW53-00321	16" Bucket
KW53-01511	14" Ripper Tooth
KW53-01611	Fenders & Light Kit

OTHER LEADING PRODUCTS

Finish Graders



Minimize material & labor costs while prepping your jobsite with the automated Dual Dozer. Attach to tractors or skid loaders with various technology options.

Spreaders



Scoop sand, salt, seed or fertilizer with the hardened cutting edge of the hydraulically powered Sandpiper Spreader. Spread widths of 30 inches up to 30 feet.

Kwik-Way Blades



V-Blade

Move snow or light material with the Kwik-Way V-Blade. Position each hydraulic panel for V forward, backwards or straight.



6-Way Blade

Have ultimate control over the heavy duty, hydraulically powered Kwik-Way 6-Way Blade. Tackle heavy dirt work, rock or snow!



Angle Blade

Ready to handle snow or light material work, the Kwik-Way Angle Blade easily attaches to skid steers & mini skids.

Fuel Transportation



Fuel Pod

Transport fuel in your truck bed or on a seed cart to finish out a job or field! Dual skid pockets allow for easy mobility.



Fuel Trailers

Transport fuel to the jobsite or field with the road-ready, DOT compliant HitchDoc Fuel Carts. Multiple options available to best fit each application.

Contract Manufacturing



With 2 facilities, 150 employees & truckloads of US steel, HitchDoc is a high-caliber & full-service manufacturing partner. Sheet, tube & plate processing, welding, machining, forming, powder-coat paint, stocking, shipping & complete assemblies are only a few of the exceptional capabilities offered. No project is too large or small for this family-owned & operated business.



Seed Carts



With over 30 models available of bulk or box seed carts with auger or conveyor options, Travis Seed Carts are overbuilt to outlast the competition.

Ejector Buckets



The patent-pending Push-Off Bucket is a proven workhorse for moving dense/sticky materials. Forget shaking & slamming your bucket while adding height & reach to your dump!

SnowBlowers



Tractor

Chew up & throw snow over the tree tops with single, double or triple auger models in the toughest conditions year after year with the PTO HitchDoc SnowBlower.



Skid Steer

Full hydraulic controls make snow blowing a breeze! Easily attaches to skid steers & made from US Prime steel.



Wheel Loader

100% hydraulic snow blower seamlessly controlled from the cab of the pay loader. No external engines, gearboxes or shear pins!

WARRANTY & RETURN POLICY

The warranty policy begins upon delivery of the product to the customer.

All warranty claims must be placed with the retailer or dealer at which the product was purchased. If the product was purchased under special circumstances or original dealer is no longer present contact HitchDoc for the nearest dealer at 1-800-446-8222.

HitchDoc warrants to its dealers who in turn warrant to the original owner that the product will be free of defects in material and workmanship for 12 months after delivery by the authorized HitchDoc dealer to the original buyer. All purchased components (example: tires, engines, hydraulic components, electrical components, gearboxes, brakes, axles, etc.) will fall under the manufacturer's warranty.

During the warranty period, authorized HitchDoc dealers shall repair or replace, at HitchDoc's option without charge for parts and labor, any part of the product which fails because of workmanship or material defect. The owner shall provide the authorized HitchDoc dealer with prompt notice of the defect and allow reasonable time for replacement or repair. HitchDoc at its option may require failed parts to be returned to the factory.

This warranty does not cover replacement of scheduled service items and high wear items. The owner shall rely solely on the warranty, if any, of the respective manufactures of given parts. This warranty does not cover damages resulting from abuse, accidents, alterations, or use the product is not approved for. Failure to properly maintain and care for the product as outlined in the owner's manual will void warranty.

Use of this product for means outside of its intended design and use will void all warranties. HitchDoc may request to have descriptions of the events which led to the failure of this product provided to them in writing. HitchDoc reserves the right to contact the owner for further clarification of the events which led to the failure of this product to aid in the warranty claim.

THIS WARRANTY IS EXCLUSIVE TO ALL OTHER WARRANTIES AND CONDITIONS. HITCHDOC DISCLAIMS ALL OTHER WARRANTIES AND CONDITIONS EXPRESSED OR IMPLIED, INCLUDING ANY IMPLIED WARRANTIES OR CONDITIONS OF MERCHANTABILITY OR FITNESS FOR A PARTICULAR PURPOSE. IN NO EVENT SHALL HITCHDOC OR AUTHORIZED HITCHDOC DEALER BE LIABLE FOR ANY SPECIAL, INCIDENTAL, INDIRECT OR CONSEQUENTIAL DAMAGES, WHATSOEVER, INCLUDING BUT NOT LIMITED TO, LOSS OR INTERRUPTION OF BUSINESS, LOSS OF PROFITS, OR LOSS OF MACHINE USE. THE TOTAL LIABILITY OF HITCHDOC AND THE AUTHORIZED HITCHDOC DEALER WITH RESPECT TO THE PRODUCT AND SERVICES FURNISHED HEREUNDER SHALL NOT EXCEED THE PURCHASE PRICE OF THE PRODUCT UPON WHICH SUCH LIABILITY IS BASED.

Prior approval for any costs related to parts, labor, or travel must be approved by HitchDoc.

The following fees may apply to returned product:

HitchDoc will apply a 20% restocking fee for material returned that is not defective.

A \$150 chroming fee will apply to hitches that are damaged from not being properly packaged.

A minimum painting fee of \$50 will apply to product that is damaged from not being properly packaged.

HitchDoc has the right to revise its Warranty Policy without prior written notice.